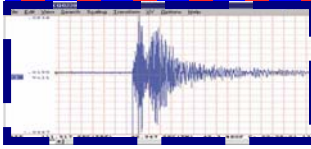


NeitClem Has Exclusive Markets

We have Access to
Your Zip Codes

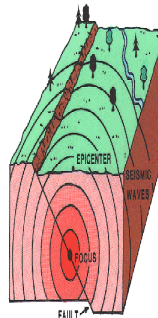
Click to View



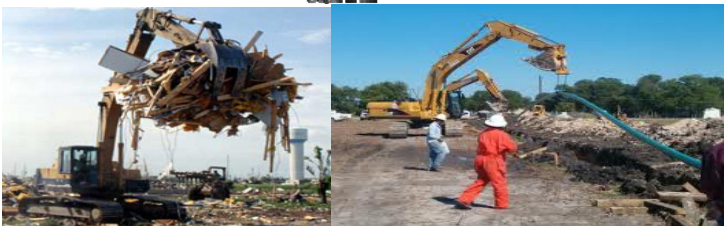
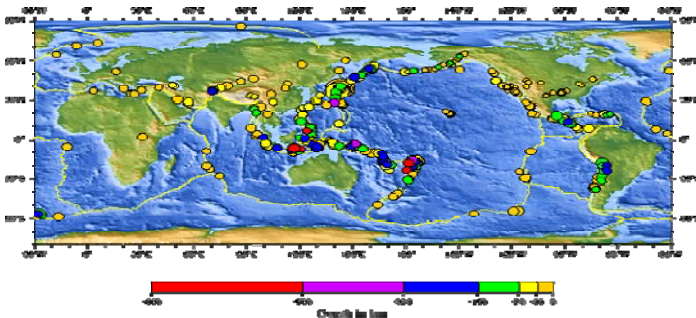
When Mother Nature throws you a curve ball, that's where NeitClem comes in. Our Difference In Conditions (DIC) form provides coverage for single or multiple perils beyond what is normally not provided in Commercial Fire policies. Protection for: Buildings, Business Personal Property, Loss of Business Income, Earthquake Sprinkler Leakage, Better for Repairs required by local ordinance or law.

Number of Earthquakes **Worldwide** for 2000 - 2011 by the US Geological Survey National Earthquake Information Center

Magnitude	2000	2001	2002	2003	2004	2005	2006	2007	2008	2009	2010	2011
8.0 to 9.9	1	1	0	1	2	1	2	4	0	1	1	1
7.0 to 7.9	14	15	13	14	14	10	9	14	12	16	21	8
6.0 to 6.9	146	121	127	140	141	140	142	178	168	144	151	77
5.0 to 5.9	1344	1224	1201	1203	1515	1693	1712	2074	1768	1895	1944	719
4.0 to 4.9	8008	7991	8541	8462	10888	13917	12838	12078	12291	16801	10402	2142
3.0 to 3.9	4827	6266	7068	7624	7932	9191	9990	9889	11735	2903	4312	317



EARTHQUAKE!



Environmental Clean-up
 Habitational (HOA's and Apartments)
 Industrials
 Municipalities
 Commercial Properties
 Properties in Course of Constructions

DIC Earthquake & Flood
 Inland Marine & Cargo in Transit
 Builders Risk COC / Improvements
 Contractors Equipment
 Environmental Liability

CALL US or EMAIL Your submission
 To: QuoteNow@NeitClem.com

NeitClem
 WHOLESALE INSURANCE
 BROKERAGE, INC.



7442 N Figueroa Street
 Los Angeles CA 90041
 Phone 323.258.2600
 Fax 323.258.2676
 CA License # 0E24609
www.neitclem.com